

# New York's LEADING Union

Over decades CSEA members have helped set standards and improve the quality of life for all New Yorkers in big and small ways.

**1910**

A group of state employees officially convenes at the state Capitol in Albany to establish the Association to preserve and promote merit and fitness in public employment.



**1934**

Beulah Bailey Thull becomes first woman president of the Association.



**1962**

CSEA membership reaches 100,000.

**100,000**

**1988**

CSEA stops IRS plan to tax unused leave.



**1991**

CSEA endorses Gov. Bill Clinton for President of the United States long before the primary season and helps to elect him.



**2009**

CSEA fights for fairness for middle class New Yorkers in state budget battle.



**1930**

In the heart of the Great Depression the Association grows enormously as Gov. Franklin D. Roosevelt recognizes the Association as a legitimate representative of state employees.



**1946**

Name of Association changed to CSEA. Constitution amended to allow membership by employees of local governments.

Westchester County employees become first local government chapter in 1947.



**1994**

CSEA supports state comptroller Carl McCall in successful lawsuits to protect the integrity of the NYS Retirement System.



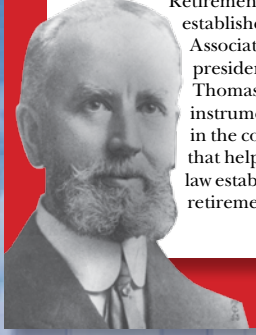
**2000**

Years of hard work succeed as CSEA is instrumental in securing a permanent Cost of Living Adjustment for the Public Employee Retirement System.



**1920**

New York State Public Employee Retirement system established. Association's first president, William Thomas, is instrumental in the commission that helps draft the law establishing the retirement system.



**1956**

CSEA instrumental in establishing the state Health Insurance Plan - extended to local government employees two years later.

**1969**

Membership surpasses 200,000.

**200,000**

**1978**

CSEA establishes statewide Women's Committee, which advances pay equity, child and family care issues.



Membership 250,000.

**250,000**

**1967**

CSEA gains full collective bargaining rights under the Taylor Law signed by Gov. Nelson Rockefeller. It remains the nation's most comprehensive law of its kind to this day.



**1999**

Membership - 265,000.

**265,000**

**2006**

CSEA is instrumental in the passage of the landmark Worksite Security Act, helping to better secure public buildings and worksites across New York.



**2007**

CSEA recognized as the representative for nearly 25,000 home child care providers, opening a new avenue to advocate for quality child care.



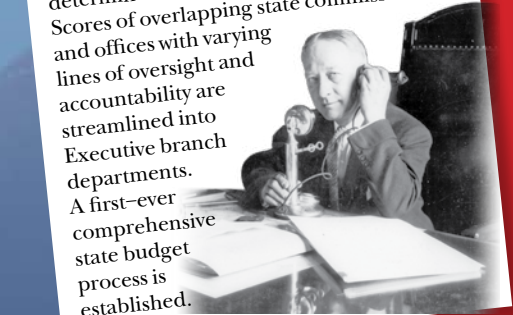
**1936**

Governor Herbert Lehman supports Association drive to end 72-hour work week for institutional employees.



**1926**

New York State government is dramatically overhauled, largely through the efforts and determination of Gov. Alfred E. Smith. Scores of overlapping state commissions and offices with varying lines of oversight and accountability are streamlined into Executive branch departments. A first-ever comprehensive state budget process is established.



**1938**

The Association helps secure enactment of the Feld-Hamilton Act establishing standard state job classification and compensation.



**1980**

CSEA leads the way nationally for safety and health protection of public employees under first of its kind legislation - the Public Employee Safety and Health Act.



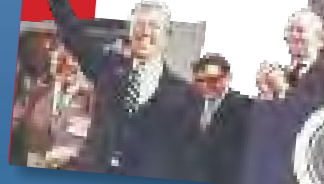
**1978**

CSEA affiliates with the American Federation of State and County and Municipal Employees (AFSCME) and becomes part of the AFL-CIO.



**1980**

President Jimmy Carter addresses CSEA Annual Delegates Meeting in Niagara Falls.



**2005**

CSEA wages campaign for future of public health care. CSEA fights to preserve Social Security.



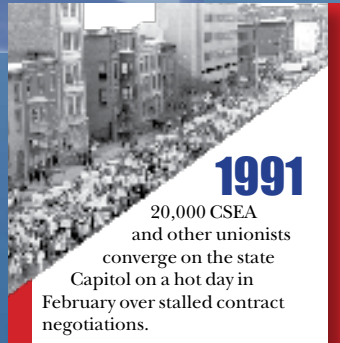
**2009**

Membership approaches 300,000.

**300,000**

**1991**

20,000 CSEA and other unionists converge on the state Capitol on a hot day in February over stalled contract negotiations.



**1930**

Membership drive balloons membership to nearly 8,500.

**8,500**

**1936**

The Association establishes groundbreaking Group Insurance program still serving as a model for benefit plans.



**1941**

The Association's involvement on the Fite Commission helps standardize civil service procedures statewide and combat patronage.



**1980**

CSEA members provide the support services for the Winter Olympic Games at Lake Placid.



**1982**

CSEA's political action efforts are recognized as a key factor in Mario Cuomo's upset primary victory for the gubernatorial nomination over New York City Mayor Ed Koch.



**2001**

September 11 - CSEA mourns the loss of five of its members in the attack on the World Trade Center.



1910 1920 1930 1940 1950 1960 1970 1980 1990 2000 2010

